

# LOST DINOSAURS OF THE GOBI

---

(September 5 – 19, 2025)

Special Paleontological Journey)



## SCIENTIFIC GOAL AND SIGNIFICANCE



Hunt for and collect dinosaurs alongside palaeontologists at two fossil-rich localities in the Gobi Desert.

**The goal of this expedition is to discover and collect dinosaur remains and assist in international efforts to counter the black-market trade of illegal fossils from Mongolia. Mongolia's Gobi Desert is renowned as one of the richest areas in the world for the discovery of dinosaur fossils.** Palaeontological exploration there spans more than a century and has been the source of such emblematic dinosaurs as Velociraptor, Gallimimus, and Tarbosaurus.

However, since the early 2000's the illegal excavation and poaching of dinosaur fossils from across Mongolia have had a hugely damaging effect on its natural history heritage, with important specimens removed from public knowledge and the scientific community. International efforts are now underway to repatriate many of the fossils seized by the authorities.

Part of this effort requires detective work to determine where in the Gobi these fossils were originally found. Using the unique elemental composition of fossil bones and rocks, researchers are helping restore this lost information, but require your help to explore the vastness of the Gobi and complete their mission. You will be helping paleontologists access new areas of the Gobi to understand the dinosaurs and the ecosystems they inhabited, hunting for new fossils along the way!

## ABOUT LEADERS



**Dr. Phil Bell** - With two decades of experience as a dinosaur expert, Australian palaeontologist. Phil Bell pioneered the application of geochemistry to determine the origins of illegally excavate fossils in Mongolia. He has lead expeditions in search of dinosaurs in Australia, Canada and Mongolia.

---

**Dr. Nic Campione** - Educated in the Canadian Badlands, Nic is a leading expert in the long-term evolution and extinction of dinosaurs. He is particularly interested in the body size evolution of dinosaurs and has led fieldwork in Canada, Australia, Uruguay, and now, Mongolia.



## ITINERARY

### DAY 1, SEP 5: ARRIVAL



Upon arrival at the airport, meet your guide and transfer to a centrally located hotel located near downtown Ulaanbaatar.

Enjoy a welcome dinner at a fine local restaurant. Ulaanbaatar offers a contrast between ancient traditions and the dawning of a 21st century democracy, which can be seen in the traditional gers and Buddhist monasteries coexisting with modern high-rises.

(Hotel Shangri La or similar; D)

---

### DAY 2, SEP 6: ULAANBAATAR / GOBI DESERT / TOST TOSON BUMBAT MOUNTAINS



After breakfast, fly over a vast steppe to the Gobi Desert, comprised of mountains, sand dunes and fossil beds. Upon arrival, we will meet our drives and begin driving to a biologists' base camp at Tost and Toson Bumbat Mountains. This is where a team of scientists from Snow Leopard Trust has been monitoring Mongolia's elusive snowleopards in the past 15 years.

**Overnight at tent camp. (Approx. 8 hours driving; Ger stay; B, L, D)**

---

### DAY 3, SEP 7: KHERMEN TSAV



After breakfast, drive further south east to the deeper pocket of the Gobi desert. We will arrive at Khhermen Tsav locality, what appears like a little Grand Canyon, with towering sand hills, cut with deep gullies and populated with Poplar trees. Considered as one of the most remote part of the Gobi Desert, this is one of the richest localities of dinosaur fossils. Arrive at your base camp and overnight in tents.

(Tent camp; B, L, D)

#### **DAY 4-6, SEP 8-10: KHERMEN TSAV PROSPECTING AND SURVEYS**

Teams will work with the scientific leads to alternatively collect and analyse fossils for their anti-poaching records and to hunt for new fossils. Daily objectives may include visiting historic excavations (quarries), locating poached quarries, and excavating important new finds. (Tent camp; B, L, D)

---

#### **DAY 7, SEP 11: KHERMEN TSAV – ALTAN UUL**



We will pack again for our next and another remote part of Altan Uul, a rich dinosaur locality in the north. Known for its one-in-only “dinosaur tombs”, Altan Uul yields some of the richest late Cretaceous fossils. It is also one of the best preserved and hidden gems of paleontology in the Gobi.

(Approx. 4 hours driving; Tent camp; B, L, D)

---

#### **DAY 8-11, SEP 12-15: ALTAN UUL**



Teams will work with the scientific leads to alternatively collect and analyse fossils for their anti-poaching records and to hunt for new fossils. Daily objectives may include visiting historic excavations (quarries), locating poached quarries and excavating important new finds.

## DAY 12, SEP 16: FLAMING CLIFFS

This morning, begin driving back towards the central part of the Gobi Desert, reaching your ger hostel located in the foothills of the Gobi Gurvansaikhan mountains. Dinner and overnight in gers.

(Approx. 9 hours driving; Ger Hostel; B, L, D)

---

## DAY 13, SEP 17: TUGRIGIIN SHIREE / FLAMING CLIFFS



In the morning, we will begin driving to the Tugrigiin Shiree, which was discovered by Mongolian scientists and co-explored by Polish expeditions in the late 1960s and early 1970s. Tugrigiin Shiree is perhaps most known for its “Fighting Dinosaurs” (a fossil of a Protoceratops and a Velociraptor locked in combat), which were discovered in the 1970s. We will explore this white sandstone escarpment for dinosaur fossils.

In the late afternoon, will drive to the legendary Flaming Cliffs, red sandstone formations that stretching over 3 kilometers in width, where hundreds of dinosaur fossils have been discovered over the course of the last century. Paleontological expeditions from many countries, including from the U.S, Poland, Japan and Russia have worked here during last 90 years. Each year, rain and wind reveal yet more fossils and every summer, exceptional new discoveries are made. We will explore the cliffs in the footsteps of legendary American explorer Roy Chapmen Andrews who discovered the first dinosaur eggs here, that the world had ever seen.

Enjoy a sunset view at this majestic place before returning back to our ger camp.  
(Ger Hostel; B, L, D)

**DAY 14, SEP 18: GOBI DESERT / ULAANBAATAR**

After breakfast, we will drive to Dalanzadagad for our return flight to Ulaanbaatar. Upon arrival, we will transfer to our hotel. Following lunch, we will drive to the Zanabazar Fine Arts Museum, named in honour of the renowned 17th century artist and politician, who was also the first Buddhist leader of Mongolia. The museum contains one of the best collections of Buddhist art and artifacts in the world, including many of Zanabazar's original works.

The remainder of the day is available for last minute sightseeing. In the evening, we will attend a performance featuring traditional Mongolian dancers and hoomi (throat) singers.

(Hotel Shangri La or similar; B, L, D)

---

**DAY 15, SEP 19: DEPARTURE**

After breakfast, we will transfer to the airport for departure. (B)

---

**B = Breakfast | L = Lunch | D = Dinner**

**Ger camp = The traditional portable, circular, wooden dwelling used by the nomadic peoples.**

**Field camp = A bit more sophisticated camping/glamping, more permanent in nature.**

**Tent camp = Expedition style, often moving regularly and smaller in size and scale.**

**MONGOLIA QUEST RESERVES THE RIGHT TO ALTER THE ABOVE ITINERARY IF DEEMED NECESSARY.**

## LAND PRICES

Based on 3-5 participants:	\$6,390 per person, twin occupancy;
Based on 6-9 participants:	\$5,890 per person, twin occupancy;
Based on 10 and more participants:	\$5,420 per person, twin occupancy;
Optional single supplement:	\$770 per person; (including a single tent)
Domestic flight:	\$480 per person

LAND PRICES INCLUDE:	LAND PRICES DO NOT INCLUDE:
<ul style="list-style-type: none"> <li>• Land transportation as indicated in the itinerary based on using Toyota Land Cruiser jeeps seating 3 passengers each;</li> <li>• Accommodations in a standard room at hotels, gers in the countryside based on a twin occupancy and expedition style camping in the countryside;</li> <li>• Airport arrival and departure transfers;</li> <li>• Sleeping bags; expedition style tents and mats;</li> <li>• All meals indicated as B, L or D;</li> <li>• All entrance fees as indicated in the itinerary;</li> <li>• International trip leaders expenses and fees;</li> <li>• Mongolian paleontologist to accompany the trip throughout;</li> <li>• English speaking national guide throughout your stay;</li> <li>• Bottled water per person per day and unlimited supply of boiled waters.</li> </ul>	<ul style="list-style-type: none"> <li>• International and domestic airfare;</li> <li>• Personal laundry;</li> <li>• Drinks not mentioned in the itinerary;</li> <li>• Travel insurance;</li> <li>• Medical evacuation costs;</li> <li>• Excess baggage charges;</li> <li>• Visa fees;</li> <li>• Gratuities;</li> <li>• Photography and video fees</li> <li>• Any other item not mentioned as included.</li> </ul>



## HOW TO BOOK THIS TRIP

You may book any trip with us by filling out our Trip Application Form, which you can download using Adobe Acrobat Reader and can send to us as an electronic file via e-mail at

- [Info@MongoliaQuest.com](mailto:Info@MongoliaQuest.com)

All reservations are subject to deposit of \$400 per person. Deposits are refundable until 90 days prior to the start of the program less a \$250 administrative fee. Please arrange a wire transfer to Mongolia Quest bank account as per following instructions:

**Beneficiary name:** MONGOLIA QUEST LLC

**Beneficiary's address:**

Suite #1205, Dalai Tower, 1st Horoo, 13th Sud-district, Sukhbaatar District,  
Ulaanbaatar 14230, Mongolia;

**Tel:** (976) 7000 9747

**Email:** [info@MongoliaQuest.com](mailto:info@MongoliaQuest.com)

**Beneficiary's account number:** 3005111070

**Beneficiary's bank name:** Golomt bank

**Beneficiary's bank address:**

Monnis branch

3rd floor, Monnis tower, Chinggis avenue

Khoroo #1, Sukhbaatar district

Ulaanbaatar, Mongolia

**Beneficiary's bank swift code:** GLMTMNUB

Once we receive your trip application form, we will send you information about how to wire your deposit to us, and a confirmation letter with information related with visa and international airfare reservations. You will also receive our pre-departure Travel Guide, which will include information on weather, suggested reading list, a list of items to pack, etc.

About 4 weeks prior to your arrival date, we will send you Final Departure Information which will include your final itinerary along with any other necessary updated information regarding the logistics of your trip.

## PAYMENT AND CANCELLATION POLICY

As mentioned above, a deposit of \$400 per person is required to reserve space for the trip that you have chosen. Full payment is due 90 days prior to the start of the trip. In the case of a cancellation, please contact us in written form.

Notification of cancellation must be received in writing by Mongolia Quest. At the time, we receive your written cancellation, the following penalties will apply:

- **Up to 90 days** prior to departure: **\$250 per person** handling fee;
- **89-60 days** prior to departure: **20% of the trip cost** per person;
- **60-45 days** prior to departure: **50% of the trip cost** per person;
- **44-30 days** prior to departure: **75% of the trip cost**, per person;
- **29 days** prior to departure, or after the trip starts: **no-refund**.

Some airfares may be nonrefundable. Once an expedition has departed, there will be no refunds from MQ for any unused portions of the trip. The above policy also applies to all extensions and independent travel arrangements made in conjunction with this program.

### Tier pricing

Our prices are based on tier pricing. At the time of booking, we will bill you for the amount based on the confirmed number of trip participants. In case the number of travelers increases at the last moment, we will reimburse the balance of your payment in accordance with the corresponding tier pricing, after you return home.

## TRAVEL NOTES

### How to get to Mongolia

The official Mongolian international civil flight carriers Mongolian Airlines or MIAT. Currently it serves flights between Beijing, Seoul, Tokyo, Hong Kong, Bangkok and Frankfurt. Other popular airlines include Asiana, Pusan and Turkish airlines. South Korea is the most common international gateway city to Ulaanbaatar. Mongolian Airlines and Turkish Airlines fly daily to/from Istanbul. If you are coming from Europe, you may also find Turkish Airlines a convenient connection. During the summer season, if no seats are available on any of these major carriers, there are ways to fly to Mongolia through local cities in China and Russia. Please contact us for more information. The seats are usually in high demand and booking needs to be done well in advance.

### Visa Information

U.S, Canadian, Japanese, Australian and citizens of most European countries are allowed to enter Mongolia without a visa for up to 30 days. All other nationals are required to get a visa before entering Mongolia.

#### THE LIST OF THE COUNTRIES TO BE EXEMPTED FROM VISA REQUIREMENTS TO VISIT MONGOLIA UP TO 30 DAYS IN THE YEARS OF 2023-2025

- |   |   |  |
|---|---|--|
| <ul style="list-style-type: none"> <li>• Czech Republic</li> <li>• Republic of Austria</li> <li>• Kingdom of Belgium</li> <li>• Hungary</li> <li>• Hellenic Republic</li> <li>• Kingdom of Denmark</li> <li>• Kingdom of Spain</li> <li>• Italian Republic</li> <li>• Republic of Latvia</li> <li>• Republic of Lithuania</li> <li>• Swiss Confederation</li> <li>• Republic of Bulgaria</li> <li>• Republic of Ireland</li> <li>• Republic of Philippines</li> </ul> | <ul style="list-style-type: none"> <li>• Principality of Liechtenstein</li> <li>• Grand Duchy of Luxembourg</li> <li>• Republic of Malta</li> <li>• Kingdom of the Netherlands</li> <li>• Republic of Poland</li> <li>• Portuguese Republic</li> <li>• Slovak Republic</li> <li>• Republic of Slovenia</li> <li>• Republic of Finland</li> <li>• Republic of Croatia</li> <li>• Canada</li> </ul> | <ul style="list-style-type: none"> <li>• Kingdom of Sweden</li> <li>• French Republic</li> <li>• Republic of Estonia</li> <li>• Kingdom of Norway</li> <li>• Republic of Iceland</li> <li>• Republic of Cyprus</li> <li>• Romania</li> <li>• Principality of Monaco</li> <li>• United Kingdom of Great Britain and Northern Ireland</li> <li>• Commonwealth of Australia</li> <li>• New Zealand</li> </ul> |
|---|---|--|

## Weather

Mongolia enjoys over 280 sunny days a year. However, because Mongolia has a continental weather pattern, weather can fluctuate drastically during any given day. We recommend packing warm clothes even if you are coming during the hottest months. Our pre-departure information will provide details regarding the weather along with a suggested packing list. Layering is the best plan to be ready for a wide array of Mongolian weather patterns.

## Accommodation

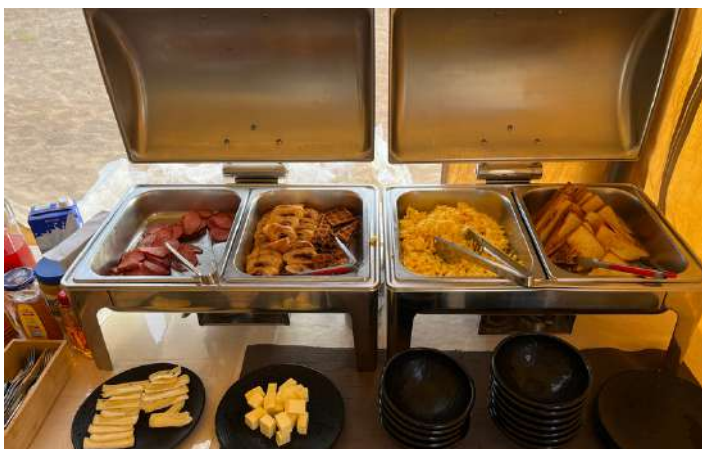


Newly renovated Soviet era hotels are located at some of the best locations in downtown Ulaanbaatar. They offer comfortable rooms and friendly services. There are also newer hotels like Kempinski Khan Palace, Ramada Ulaanbaatar and Best Western Inn. The countryside accommodations are arranged in “ger camps,” which provide authentic nomadic felt tents with centralized bathroom and toilet facilities located nearby. They offer clean, comfortable beds and plentiful meals.

## Safety

Mongolia is devoid of any political, religious and ethnic sectarian conflicts and is considered one of the safest countries in the world for international travelers. However, like in any other country, crimes do happen, so a good sense of caution and respect shown to the locals can help to avoid unnecessary confrontations. Mongolians are generally hospitable people who love to interact with foreigners.

## Food



Mongolia’s capital, Ulaanbaatar, hosts an excellent collection of fine restaurants of international cuisine. In the countryside, tour establishments offer hearty meals with a balance of meat and vegetables. Meat in Mongolians excellent in that the whole country is essentially “free-range” terrain. Even your strictest dietary restrictions can now be met with proper information in advance and preparation by us.

## **Information about Currency and Payment Methods**

Mongolia's national currency is called tugrik and the exchange rate is about 3,400 tugrik to a US dollar. Major currencies can be exchanged at the hotels and pawnshops, and ATM machines are widely available throughout Ulaanbaatar and provincial centers. However, Australian dollars can usually only be exchanged at banks. Traveler's checks can be cashed at banks and major credit cards are accepted at most places in the capital, but only Mongolian cash is accepted in the countryside. We recommend that you travel with Mongolian national currency equal to at least \$200 when touring in the countryside.

## **Souvenirs**

Like any other places, Mongolia offers great souvenirs ranging from camel wool sweaters to cashmere scarves and traditional wooden puzzle games. Mongolian vodkas can be an excellent gift. At several stores, you can also find a range of traditional Mongolian musical instruments such as the famed Morin Khuur or "horse headed fiddle." Bargaining is not very customary; most items are sold for the price on their labels. If you plan to shop for souvenirs, we recommend purchasing locally as many items as possible since your purchases will be a direct contribution to the local community.

## **Travel Insurance**

With Mongolia stretching over 1.5 million square kilometers and its population concentrated in the cities, we will be traveling through some remote areas away from good roads and medical facilities. We strongly recommend that you consider getting standard emergency medical evacuation insurance as a means to protect yourself from unexpected accidents that can happen during any trip. Nothing is better than traveling with peace of mind knowing that you have prepared for the trip as much as possible in advance

## **Traveling with Mongolia Quest**

Because it is still a developing country, traveling in Mongolia requires a sense of humor and patience. New roads and bridges are being built every year, but the paved road system is still limited in the countryside. You may experience flight delays and find road conditions bumpy and dusty. But the experience of traveling in Mongolia will far exceed some personal compromises in comfort. We like to say that the best part of traveling in Mongolia is spontaneous events and interactions, which lead to unexpected interactions, discoveries, and experiences that will make your trip unique and memorable. At Mongolia Quest, we ensure the integrity of your overall itinerary but at the same time, will go out of our way to make necessary changes in order to enrich your travel experience with us.

**ENJOY YOUR TRIP!**